

# LOOKING TO MAKE YOUR PAINT SHOP MORE PROFITABLE?

Invest just 20 minutes in...

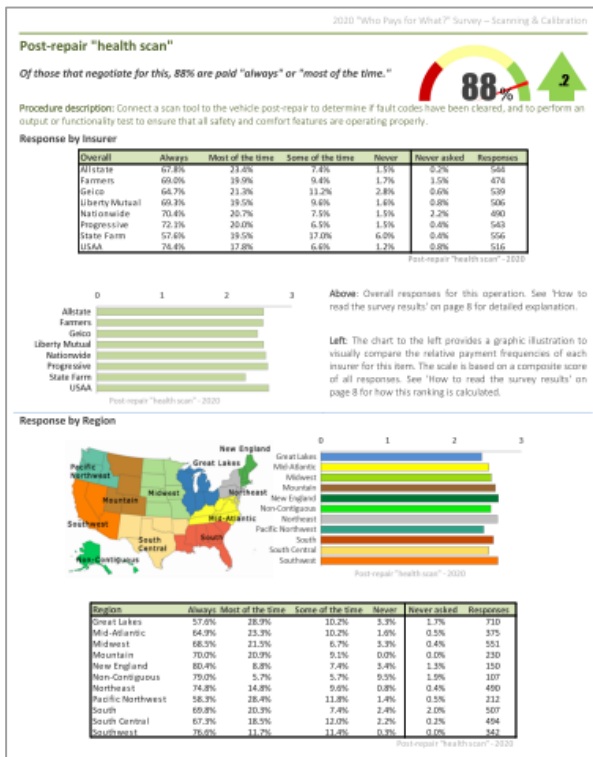
## Who Pays for What?



A quarterly survey that this month will help you and your team:

- Identify two dozen refinish labor procedures not-included in estimating database times that your shop is likely performing but may not be including on estimates
- Learn how frequently other shops are being paid for those procedures by the eight largest insurance companies
- Receive a free report on the survey findings with tools and resources to help you successfully negotiate to be paid for these "not-included" procedures

More than 4,900 shops participate!  
89% said participating has improved their business!



Getting paid for *just one* refinish labor procedure more regularly will provide significant return on the few minutes you invest!

It's fast. It's free. It's confidential.

[Click here](#) to get started  
or visit [www.CollisionAdvice.com](http://www.CollisionAdvice.com)

A service provided at no charge to the industry by  
Collision Advice and CRASH Network



**COLLISIONADVICE**

[www.CollisionAdvice.com](http://www.CollisionAdvice.com)



[www.CrashNetwork.com](http://www.CrashNetwork.com)